

New limits on the low frequency radio transient sky using 31 hours of all-sky data with the OVRO-LWA

MARIN M. ANDERSON,¹ GREGG HALLINAN,¹ MICHAEL W. EASTWOOD,¹ RYAN M. MONROE,¹ THOMAS A. CALLISTER,²
JAYCE DOWELL,³ BRIAN HICKS,⁴ YUPING HUANG,¹ NAMIR E. KASSIM,⁴ JONATHAN KOCZ,¹ T. JOSEPH W. LAZIO,⁵
DANNY C. PRICE,^{6,7} FRANK K. SCHINZEL,^{8,3} AND GREG B. TAYLOR³

¹*California Institute of Technology, 1200 E California Blvd MC 249-17, Pasadena, CA 91125, USA*

²*LIGO Laboratory, California Institute of Technology, Pasadena, CA 91125, USA*

³*Department of Physics and Astronomy, University of New Mexico, Albuquerque, NM 87131 USA*

⁴*Naval Research Laboratory, Washington, DC 20375, USA*

⁵*Jet Propulsion Laboratory, California Institute of Technology, 4800 Oak Grove Dr, Pasadena, CA 91109, USA*

⁶*Department of Astronomy, University of California Berkeley, Berkeley CA 94720, USA*

⁷*Centre for Astrophysics & Supercomputing, Swinburne University of Technology, PO Box 218, Hawthorn, VIC 3122, Australia*

⁸*National Radio Astronomy Observatory, P.O. Box O, Socorro, NM 87801 USA*

ABSTRACT

We present the results of the first transient survey from the Owens Valley Radio Observatory Long Wavelength Array (OVRO-LWA) using 31 hours of data, in which we place the most constraining limits on the instantaneous transient surface density at timescales of 13 s to a few minutes and at frequencies below 100 MHz. The OVRO-LWA is a dipole array that images the entire viewable hemisphere with 58 MHz of bandwidth from 27–84 MHz at 13 s cadence. No transients are detected above a 6.5σ flux density limit of 10.5 Jy, implying an upper limit to the transient surface density of $2.5 \times 10^{-8} \text{ deg}^{-2}$ at the shortest timescales probed, which is orders of magnitude deeper than has been achieved at sub-100 MHz frequencies and comparable flux densities to date. The non-detection of transients in the OVRO-LWA survey, particularly at minutes-long timescales, allows us to place further constraints on the rate of the potential population of transients uncovered by [Stewart et al. 2016](#). From their transient rate, we expect a detection of $8.4^{+31.8}_{-8.0}$ events, and the probability of our null detection is $1.9^{+644}_{-1.9} \times 10^{-3}$, ruling out a transient rate $> 1.4 \times 10^{-4} \text{ d}^{-1} \text{ deg}^{-2}$ with 95% confidence at a flux density limit of 18.1 Jy, under the assumption of a flat spectrum and wide-bandwidth. We discuss the implications of our non-detection for this population and further constraints that can be made on the source spectral index, intrinsic emission bandwidth, and resulting luminosity distribution.

Keywords: instrumentation: interferometers, radiation mechanisms: non-thermal, radio continuum: general

1. INTRODUCTION

Exploration of the time domain plays a critical role in the field of astronomy, as a window into the dynamic, often cataclysmic or explosive, processes that mark a highly non-static universe. Time domain radio astronomy, in particular, serves as a unique probe of astrophysical processes which can be otherwise inaccessible at other wavelengths, either due to extrinsic factors, such as dust obscuration, or intrinsic factors, such as emission that is beamed or unique to radio frequencies.

Recent advances in the survey speed and sensitivity of radio interferometers has facilitated the expansion of radio transient science from the realm of follow-up of transient detections at shorter wavelengths, such as extragalactic, incoherent synchrotron events such as gamma-ray bursts, supernovae, and tidal disruption events (e.g., [Chandra & Frail 2012](#); [Soderberg et al. 2010](#); [Zauderer et al. 2011](#)), toward wide-field, non-targeted synoptic imaging surveys exploring a wide range of phase space in the dynamic radio sky (e.g., [Mooley et al. 2016](#)). Incoherent synchrotron

powered transients, due to both the lower luminosities from self-absorption and typically slow timescale of evolution at low frequencies, are better recovered at GHz frequencies (see Metzger et al. 2015). However, surveys at low (< 350 MHz) frequencies benefit from the many sources of coherent emission that fill radio transient phase space (see Cordes et al. 2004; Macquart et al. 2015). Coherent emission is extremely bright, and can be variable on timescales as short as nanoseconds (Hankins et al. 2003). In addition, many of the source populations that have been identified to-date either emit exclusively at low frequencies, such as cyclotron maser-powered auroral radio emission from the magnetized planets in the solar system (Zarka 1998), or exhibit emission with steep negative spectral indices (Lorimer et al. 1995; Kramer et al. 1999) that motivate surveys conducted at lower frequencies. Surveys at low frequencies also benefit from the inherently wide fields-of-view and fast survey speeds of dipole arrays. This is increasingly the case with the rise of low frequency telescopes such as the Long Wavelength Array (LWA; Ellingson et al. 2009), the Murchison Widefield Array (MWA; Tingay et al. 2013), the Low-Frequency Array (LOFAR; van Haarlem et al. 2013), and now the Owens Valley Radio Observatory Long Wavelength Array (OVRO-LWA). This also includes the upgrade of low-frequency receivers on existing dish arrays such as the Very Large Array (VLA) Low Band Ionospheric and Transient Experiment (VLITE; Polisensky et al. 2016) and the Giant Metrewave Radio Telescope (GMRT; Intema et al. 2017).

At extragalactic distances, potential transient sources at low frequencies include bright, coherent pulses predicted to accompany gamma-ray bursts (GRBs) and neutron star mergers (see Anderson et al. 2018, and references therein), as well as fast radio bursts (FRBs), highly dispersed millisecond pulses that have been detected at frequencies as low as 400 MHz (Amiri et al. 2019). The degree of scatter broadening from the current sample of FRBs indicates the potential for detecting this population even at very low frequencies (Ravi 2019). At galactic distances, potential transient sources at low frequencies include stellar flares and coherent radio bursts (Spangler & Moffett 1976; Bastian 1990; Lynch et al. 2017; Villadsen & Hallinan 2018), for which our Sun serves as a prototype (Bastian et al. 1998), as well as radio aurorae on brown dwarfs (Hallinan et al. 2015; Kao et al. 2016), a phenomenon that likely also extends down in mass to exoplanets (Lazio et al. 2004; Kao et al. 2018), and for which the magnetized planets in our solar system serve as a prototype (Zarka 1998). Within Earth’s atmosphere, potential transient sources include radio emission from meteor afterglows recently discovered at low frequencies (Obenberger et al. 2014), as well as radio emission from cosmic ray showers and neutrinos (Falcke & Gorham 2003).

Transient surveys carried out by the aforementioned low frequency facilities continue to place more sensitive and constraining limits on the radio transient sky below 350 MHz, across a wide range of timescales. Table 1 summarizes the parameters and results of previous blind, non-targeted transient surveys at low frequencies (< 350 MHz). From these surveys there have been seven distinct transient discoveries, all of which remain mysterious in origin, with no identified progenitors, and no corresponding larger population yet uncovered.

- Three transient sources were discovered during separate monitoring campaigns of the galactic center, thus the label Galactic Center Radio Transient (GCRT). The first of these, GCRT J1746-2757, found in 330 MHz VLA observations of the galactic center, evolved on the timescale of a few months and reached ~ 200 mJy flux densities (Hyman et al. 2002). GCRT J1745-3009, also found at 330 MHz with the VLA and subsequently re-detected with the GMRT, was a coherent, steep-spectrum source, exhibiting ~ 1 Jy bursts of approximately 10 minutes in duration, that were detected repeatedly with a 77 minute period (Hyman et al. 2005, 2007). And lastly, GCRT J1742-3001 was discovered at 235 MHz with the GMRT, and reached ~ 100 mJy flux densities and evolved on a \sim few months-long timescale (Hyman et al. 2009).
- Jaeger et al. 2012 detected the source J103916.2+585124 in 325 MHz VLA archival observations that were selected based on their coverage of the Spitzer-Space-Telescope Wide-area Infrared Extragalactic Survey (SWIRE) Deep Field. The source reached 2 mJy flux densities with duration of ~ 12 hours, and has no identified progenitor, despite extensive multi-wavelength coverage of the field in which it was detected.
- TGSSADR J183304.4–384046 was found in comparison of the 150 MHz GaLactic and Extragalactic All-sky MWA (GLEAM) and TIFR GMRT Sky Survey (TGSS) catalogs. Given the 180 mJy flux density and long (1–3 yr) timescale of evolution of this source, this candidate transient may be an example of an extragalactic synchrotron transient detected at low frequencies, the first of many such transients which may be uncovered by the Square Kilometre Array (SKA; see Metzger et al. 2015) – follow-up observations are ongoing (Murphy et al. 2017).

- From 10 240 hours of simultaneous monitoring with LWA1 and LWA Sevilleta (LWA-SV; [Cranmer et al. 2017](#)), a possible transient was discovered at 34 MHz with an approximately 830 Jy flux density, with a duration of 15–20 seconds ([Varghese et al., ApJ submitted](#)), based on its simultaneous detection by both LWA stations.
- The transient detection that is most relevant to this work was detected by [Stewart et al. 2016](#) in LOFAR Multifrequency Snapshot Sky Survey (MSSS) data. The source, ILT J225347+862146, was detected at 60 MHz and reached peak flux densities of 15–25 Jy over an 11 min timescale. Although the origin of this transient emission remains a mystery, with no identified higher-energy counterpart, the flux density and implied rate of this event suggests that this may be a dominant population in the low frequency transient sky, and one to which the OVRO-LWA is sensitive.

Table 1. Radio transient surveys at low frequencies (< 350 MHz).

(1)	(2)	(3)	(4)	(5)	(6)	(7)	(8)	(9)
Reference	Instrument	Center Frequency (MHz)	Bandwidth (MHz)	Search Sensitivity (Jy)	Timescale searched	Ω_{FOV} (deg ²)	N_{epochs}	$N_{\text{transients}}$
0	LWA1 & LWA-SV	34, 38	0.1	246	5 s, 15 s, 60 s	10 300	7.4×10^6	1
1	OVRO-LWA	56	58	10.5, 13.8, 18.1, 20.8, 19.3, 19.7	13 s, 39 s, 2 min, 6 min, < 1 d, < 35 d	17 045	8 586, 2 862, 954, 318, 1, 1	0
2	LOFAR	60	0.195	36.1, 21.1, 7.9, 5.5, 2.5	30 s, 2 min, 11 min, 55 min, 297 min	176.7	41 340, 9 262, 1 897 328, 32	1
3	LWA1	38, 52 74	0.075	540, 230 570	5 s	8 353.7	6.1×10^6 , 1.4×10^6 1.0×10^6	0
4	LWDA	73.8	1.6	2 500	300 s	10 000	29 437	0
5	LOFAR	149	0.781	0.5	11 min	11.35	26	0
6	LOFAR	150	48	0.3	15 min, 100 d	15.48	151	0
7	MWA-32T	154	30.72	5.5	26 min, 1 yr	1 430	51	0
8	MWA	150	...	0.1	1-3 yr	16 230	2	1
9	MWA	182	7.68	0.285	28 s, 5 min, 10 min, 1 h, 2 h, 1 d, 3 d, 10 d, 30 d, 90 d, 1 yr	452	10 122	0
10	MWA	182	30.72	0.02, 0.200	1 h, 30 d	186	652, 28	0
11	GMRT	235	15	0.003 – 0.01	1 d – 2 yr	3.2	20	1
12	VLA	325	12.5	0.0021	12 h	6.5	6	1
13	VLA	330	3.1	64.8	~ 10 yr	4.9	2	1
14	VLA	330	6.2	0.05	5 min	7	440	1
15	VLITE	340	64	0.1	10 min – 6 h	5.5	2799	0

References—(0) [Varghese et al., ApJ submitted](#); (1) This work; (2) [Stewart et al. 2016](#); (3) [Obenberger et al. 2015b](#); (4) [Lazio et al. 2010](#); (5) [Cendes et al. 2014](#); (6) [Carbone et al. 2016](#); (7) [Bell et al. 2014](#); (8) [Murphy et al. 2017](#); (9) [Rowlinson et al. 2016](#); (10) [Feng et al. 2017](#); (11) [Hyman et al. 2009](#); (12) [Jaeger et al. 2012](#); (13) [Hyman et al. 2002](#); (14) [Hyman et al. 2002](#); (15) [Polisensky et al. 2016](#).

NOTE—Summary of transient surveys at low frequencies (< 350 MHz) conducted to-date, ordered from lowest to highest frequency. Note that only non-targeted, “blind” surveys are included here. In column 5, the search sensitivity refers to the detection threshold that was specified by each survey for transient detection – when not specified, a 6σ threshold is assumed. When only one value is given for N_{epochs} for a survey probing a range of timescales, the value applies to the shortest timescale reported. For [Hyman et al. 2002](#), we consider only the two epochs that were involved in the initial discovery of GCRT J1746-2757, and exclude any follow-up analysis that targeted the field post-discovery.

In order to shed light on the nature of the potential population of sources revealed by the transient of [Stewart et al. 2016](#), as well as to explore the low frequency radio sky for other transient phenomena, we have conducted a survey with the OVRO-LWA from 27–84 MHz, imaging the entire viewable sky ($\sim 1.6\pi$ sr) every 13 seconds with approximately $10'$ spatial resolution, to search for transient sources on timescales ranging from 13 seconds to \sim days, using 31 hours of observations. The survey observations and description of the OVRO-LWA are given in Section 2. In Section 3, we describe our transient detection pipeline, with the results of the survey detailed in Section 4. The upper limits on the transient surface density placed by the non-detection of transients in our survey are given in Section 5, as well as the implications of our non-detection on the potential population of transients similar to that detected by [Stewart et al. 2016](#). We conclude in Section 6 and outline the future of OVRO-LWA transient science.

2. OBSERVATIONS

2.1. OVRO-LWA

The OVRO-LWA is a low frequency, dual-polarization dipole array currently under development at the Owens Valley Radio Observatory (OVRO) in Owens Valley, California, operating between 27–84 MHz. The completed array will consist of 352 elements – 251 elements contained within a 200 m diameter compact core, and 101 elements spread across maximum baselines of 2.5 km. The OVRO-LWA operates by cross-correlating the signals from all elements, providing a snapshot imaging capability with the full-sky field-of-view (FOV) of a dipole antenna, roughly 5′ spatial resolution at a cadence of a few seconds, with 100 mJy sensitivity across an instantaneous bandwidth of approximately 60 MHz.

At the time of the observations described here, the OVRO-LWA was in “stage II” of development, incorporating the 251-element core and a 32-element Long Baseline Demonstrator Array (LBDA) spread across maximum baselines of 1.5 km. The Large-Aperture Experiment to Detect the Dark Age (LEDA) correlator (Kocz et al. 2015) takes 512 inputs (256 antennas \times 2 polarizations) and correlates all signals across a 27-84 MHz band (2400 channels at 24 kHz resolution) with a 13 second cadence. The stage II OVRO-LWA began operations in December 2016, and early science includes constraints on the sky-averaged HI absorption trough at $16 < z < 34$ (Price et al. 2018); high-fidelity low frequency maps for use in foreground filtering techniques, as well as the first constraints on the angular power spectrum of redshifted HI at low frequencies (Eastwood et al. 2018; Eastwood et al., *AJ* submitted); the first detection of high-energy cosmic rays without reliance on triggers from particle detectors (Monroe et al., *NIM-A* submitted); and constraints on coherent emission mechanisms associated with short gamma ray bursts (GRBs; Anderson et al. 2018).

2.2. The 31-Hour Dataset

The first dedicated survey observation with the stage II OVRO-LWA was conducted on 2017 February 17, for 28 hours of continuous observations from 12:00 UTC through 2017 February 18 16:00 UTC. Data were recorded at 13 second integrations, with 2398 frequency channels spanning 27.38 – 84.92 MHz (24 kHz frequency resolution). The cadence was chosen because a sidereal period is almost exactly an integer multiple of 13 s, and this makes possible the subtraction of sidereally separated integrations as a means of searching for transients with sensitivity to all timescales up to a sidereal day. The OVRO-LWA is a zenith-pointing telescope, with each snapshot image covering the full visible hemisphere – the 28 hour run consists of 7756 contiguous full sky snapshots. In addition to this dataset, a 3 hour observation (832 contiguous full sky snapshots) from 2017 January 12 01:02 – 04:02 UTC that was conducted as part of a short GRB follow-up program (Anderson et al. 2018) was included (with near identical configuration to the 28 hour dataset), to bring the amount of data used in the transient search to 31 hours (see Table 2).

Table 2. The observations and corresponding calibration times that comprise the 31-hour dataset.

(1)	(2)	(3)	(4)
Start time [UTC]	End time [UTC]	Number of snapshots	Calibration [UTC]
2017-01-12 01:02:02	2017-01-12 04:02:05	832	2017-01-11 20:26:39
2017-02-17 11:59:54	2017-02-18 16:00:09	7756	2017-02-17 18:02:10

2.3. Calibration and Imaging

The raw visibility datasets produced by the LEDA correlator are converted into the standard Common Astronomy Software Applications (CASA; McMullin et al. 2007) measurement set table format (van Diepen 2015). Prior to calibration, antenna autocorrelation spectra are inspected and antennas are flagged if the median spectral power of an antenna is not within 2 standard deviations of the median power across all antennas. This is sufficient for identifying all antennas with issues along the signal path that resulted in a loss of, or sufficient distortion of, sky signal. For this dataset, 50 out of 256 antennas were flagged. An additional set of flags are applied in baseline-space, to avoid the effects of cross-coupling in adjacent lines in the analog signal path, and to remove a subset of bad baselines that are manually selected from the visibilities, resulting in the removal of less than 2% of baselines. Channel flags are

generated on a per-integration basis, by identifying channels with visibility amplitudes that are outliers in their mean and max amplitudes relative to the rest of the band. This typically results in fewer than 240 out of 2398 channels flagged. In total, approximately 40% of visibilities are flagged per integration, the majority of which is due to the large number of antenna flags, however because the array is still dominated by confusion noise and other systematics even at the shortest timescales, the removal of such a large fraction of visibilities does not impact the sensitivity of the array.

The data are calibrated using a simplified sky model consisting of the two brightest sources in the sub-100 MHz sky: the radio galaxy Cygnus (Cyg) A and the supernova remnant Cassiopeia (Cas) A, using the model flux and spectral indices given in Baars et al. 1977 for the former and Perley & Butler 2017 for the latter, extrapolated down to 28 MHz. The complex (amplitude and phase) antenna gains are determined on a per-channel basis from the two-source Cyg A-Cas A sky model using the CASA `bandpass` task, using baselines greater than 15 wavelengths in order to mitigate the effect of diffuse galactic synchrotron emission. The calibration solutions are derived from a single integration and remain sufficiently stable for roughly 24 hours, thus only one set of calibration solutions are generated per observation (see Table 2), from an integration when Cyg A is at its highest elevation in the beam ($\sim 87^\circ$). We note that the two-source model used in the calibration process constitutes a grossly incomplete sky model, however it provides sufficient signal-to-noise to solve for a set of complex gains. Future surveys will incorporate a more complete sky model (generated from the full-sky maps of Eastwood et al. 2018), with calibration solutions derived from visibilities averaged over multiple integrations.

Additional direction-dependent calibration and source subtraction (peeling) towards Cyg A and Cas A are performed on single-integration timescales (when either of the two sources is above the horizon), using visibilities with baselines greater than 10 wavelengths to derive the direction-dependent calibration. This is necessitated by variations in the antenna gain pattern between individual dipole beams, caused by mutual coupling between adjacent antennas, and to a lesser degree, deviations in antenna orientation and ionospheric fluctuations. Peeling solutions are also derived on a per integration basis for a generic source in the near-field of the array. This is done to remove the effects of a stationary noise pattern in the data, which has distinct spectral, temporal, and spatial characteristics, likely caused by a combination of common-mode pickup and cross-talk in the analog electronics. Peeling is performed using the `TTCal` calibration software package developed for the OVRO-LWA (Eastwood 2016). Imaging and deconvolution are done with `WSClean` (Offringa et al. 2014). The full FOV is imaged over 4096×4096 pixels, with a pixel scale of $1.875'$ and using a robust visibility weighting of 0 (Briggs 1995). At the time of these observations, a set of northeast LBDA antennas were not operational, resulting in an abnormally elongated synthesized beam with a major axis of $29'$, a minor axis of $13.5'$, and a position angle of 50° . Figure 1 shows an example 13-second snapshot full sky image taken from the 31-hour dataset, using the full 58 MHz of bandwidth, and an approximation of the primary beam as a function of elevation angle.

The transient detection by Stewart et al. 2016 in 400 hr of LOFAR Multifrequency Snapshot Sky Survey (MSSS) data with 195 kHz of bandwidth at 60 MHz, in a field centered on the north celestial pole, represents the detection of a potentially new and exciting transient source population. From this event, Stewart et al. 2016 report a transient rate of $3.9^{+14.7}_{-3.7} \times 10^{-4} \text{ d}^{-1} \text{ deg}^{-2}$ at a flux density level of 7.9 Jy. This corresponds to an expected detection of $8.4^{+31.8}_{-8.0}$ events in the 31-hour OVRO-LWA transient survey, under the assumption that the transient emission is broadband in nature. Investigating and verifying this population therefore represents a primary goal of the OVRO-LWA transient survey. One of the timescales probed using the full 31 hours of the OVRO-LWA transient dataset is 6 min, which is able to capture the relevant timescale over which the Stewart et al. 2016 transient showed an appreciable increase in flux (the total duration of the event was 11 min, but showed an approximately 100% increase in flux over a 2 min period).

3. THE TRANSIENT PIPELINE

3.1. Timescales

The full 31 hr dataset comprising the OVRO-LWA transient survey was searched across a range of timescales by performing subtractions in image space of either sequential integrations or a sliding boxcar of width determined by the number of integrations in a given timescale, in order to remove the diffuse galactic emission and non-intrinsically varying sources and to generate “difference” images that are sensitive to sources which are varying on the timescale given by the integration spacing. Sequential image subtraction was used to probe timescales of 13 s (single integrations), 39 s (3 integrations), 2 min (9 integrations), and 6 min (27 integrations). In addition, sidereal subtraction using 3 hr

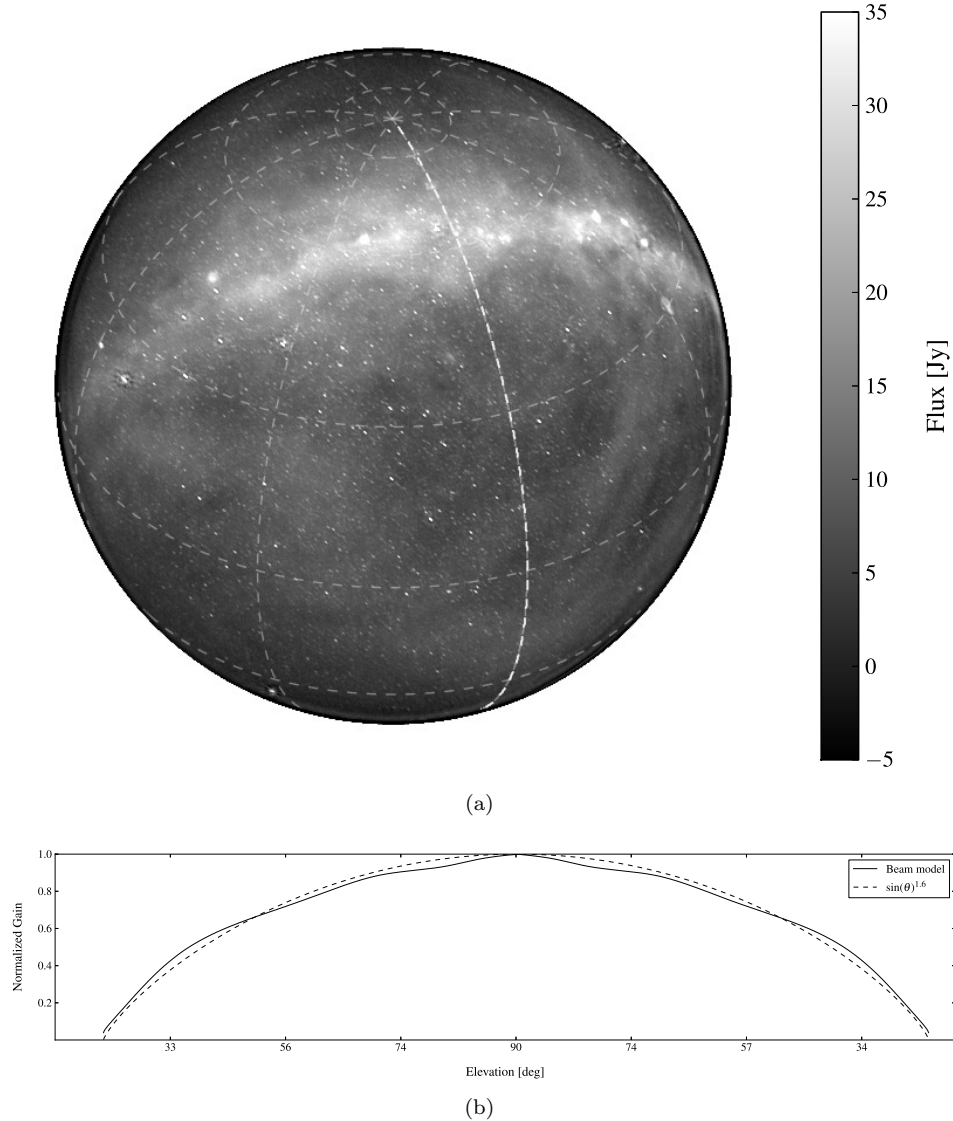


Figure 1. Snapshot full-sky image from the OVRO-LWA at 2017-01-12 02:02:05 UTC, with dashed contours denoting lines of constant RA and dec (a), and a cut through the primary beam at an azimuth of 0° , comparing a simulated LWA dipole beam with ground screen to the standard dipole approximation given by $\sin^{1.6}(\theta_{el})$, as a function of elevation angle (b). The beam model is symmetric, so that an orthogonal cut through the beam at an azimuth of 90° would yield an identical normalized gain pattern. The entire field-of-view down to an elevation angle of 10° is searched in the transient pipeline. In the snapshot image, zenith is located in the center, with the horizon represented by the perimeter of the circle. The diffuse emission is galactic synchrotron emission. In a single snapshot image, greater than 2000 point sources are detected above the local 5σ threshold (see §3).

of data with overlapping sidereal coverage between the 2017 January 12 and 2017 February 17 observations, as well as 4 hr of data with overlapping sidereal coverage within the 2017 February 17 observations, was used to search for transients on all timescales simultaneously (up to 36 d and 24 hr, respectively).

3.2. Sensitivity

The difference images are generated by selecting snapshots separated by N integrations, matching the phase centers between the two snapshots to partially account for sky rotation, and subtracting the resulting images. Images are not deconvolved prior to subtraction due to computational limitations associated with deconvolution of many tens of thousands of all-sky images. In addition, because we are not averaging visibilities in time when performing the

transient search on longer timescales, and instead selecting 2 snapshot images separated by a given timescale, there is no gain in sensitivity (by a factor $\propto \sqrt{t_{\text{int}}}$) for difference images probing longer timescales. The average noise actually increases towards longer timescales, largely due to limitations associated with bright source sidelobes and incomplete sky subtraction between widely spaced integrations. The direction dependent calibration and subtraction (peeling) which was described in Section 2.3 above is performed on the 2 brightest sources in the low frequency sky (Cas A and Cyg A). The effects which necessitate the peeling of these sources are also present for the remaining sources in the FOV, however computational limitations and signal to noise requirements for the peeling process prevent the removal of the next set of brightest sources in the low frequency sky (e.g., Taurus A and Virgo A). The result is sidelobe artifacts that cannot be successfully peeled out. These create a noise floor that is above the expected thermal noise on single integration timescales and is therefore the limiting factor when averaging visibilities on longer timescales. The direction dependent effects inherent to this issue are almost entirely dominated by beam to beam variation between dipoles, and the eventual mapping of the individual OVRO-LWA dipole beams will allow significant improvement in noise for difference image searches on longer timescales.

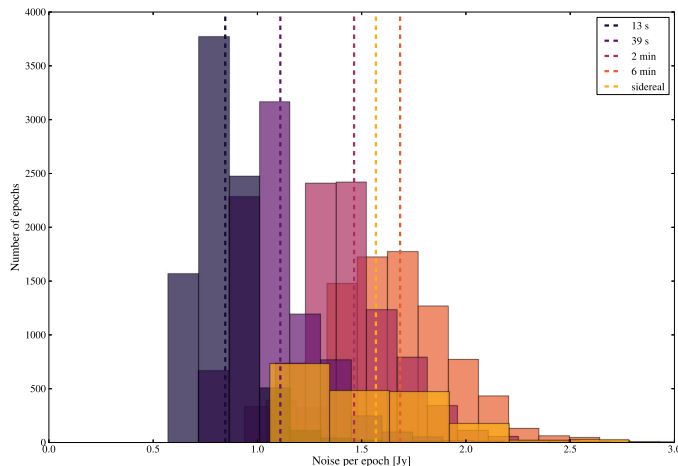


Figure 2. Histogram of the noise, as measured from the pixels in the 15° region surrounding zenith, in each difference image epoch, for all timescales probed. The dashed lines show the mean value of the noise for each timescale.

The other factor which must be taken into account when computing the sensitivity of our survey is the fact that our transient pipeline searches over nearly the entire primary beam FOV, down to an elevation angle of 10° . The result is non-uniform sensitivity over our $\sim 17000 \text{ deg}^2$ FOV. To account for this, the noise is measured in the central regions of each difference image surrounding zenith. The effect of the primary beam is approximated as $1/\sin^{1.6}\theta_{\text{elevation}}$ (see Figure 1(b)), and the noise we measure across the whole field for each epoch of the survey is approximated as the noise at zenith times the mean of the primary beam pattern weighted by the fractional area of the FOV as a function of elevation angle. Taking into account the 6.5σ threshold of the transient search pipeline, this results in sensitivities at each timescale as reported in Table 5. Because we are using a single measurement of the noise at zenith to approximate our sensitivity across the entire FOV, we are necessarily neglecting subtle variations in the noise across the image due to things like bright source sidelobes, etc. However, given the large number of epochs over which we are computing our survey sensitivity, these variations are not likely to significantly alter our noise values.

Table 3 gives the average RMS noise and number of epochs for each timescale searched. We note that the noise in a difference image is equal to the quadrature sum of the noise for the two images from which it was generated (i.e., $\sigma_{\text{diff}} = \sqrt{\sigma_t^2 + \sigma_{t+\Delta t}^2}$). However, this is still an improvement in noise over the confusion-limited single snapshot images (Cohen 2008).

3.3. Source Extraction

Sources that are present in each subtracted image are identified through the source extraction pipeline, cross-matched with any subsequent detections of a source at the same position in later snapshots and other timescales, and added to a candidate transient list. The source extraction algorithm is custom-built for the OVRO-LWA transient pipeline,

Table 3. The average noise in the sequentially subtracted images for each of the transient timescales searched.

(1)	(2)	(3)
Timescale	Average RMS [Jy beam ⁻¹]	Number of epochs
13 s	0.85	8586
39 s	1.11	8582
2 min	1.56	8570
6 min	1.68	8534
sidereal	1.57	1960

NOTE—The noise is measured from a region centered on zenith with a radius of approximately 15° . Single integration (13 s) images are consistent with thermal noise. There is an increase in noise on longer timescales due to the fact that the difference images are generated by subtracting non-deconvolved images generated from visibilities at different local sidereal times (LSTs), rather than averaging in time (see Section 3.2).

and utilizes a hierarchical clustering algorithm (using SciPy’s `scipy.cluster` clustering package) that can accurately identify individual sources from the frequently non-contiguous set of pixels above the selected noise threshold which comprise a given source in the non-deconvolved subtracted images. Candidate transient sources are identified through the following:

1. Each sequential subtracted image is divided up into 16 image regions, and all pixels above a 5σ local noise threshold in each region are identified, and grouped into “islands” using a hierarchical clustering algorithm with a distance-based linkage function (see Figure 3). There are of order 100 candidate transients identified in each sequential subtracted image above the 5σ local noise threshold.
2. The transient candidate detections in individual subtracted images are merged together across the full dataset to create a catalog of transient candidates, which is cross-matched with the self-generated catalog of sources present within the 31-hour dataset (see Section 3.4). The vast majority of sources detected in the sequential subtracted images are persistent sources that exhibit variability on 13 second timescales due to scintillation. Any remaining sources that are not co-located with any of the known catalogued sources are classified as potential transient events. This reduces the number of sources detected in a single difference image from of order 100 to a few. At this point in the pipeline, the threshold above which a source was kept in consideration as a candidate transient event was raised to 6.5σ , so as to reduce the number of false positive sources due to Gaussian noise fluctuations and maintain a manageable number of candidate events. Table 3 gives the approximate flux density levels this 6.5σ threshold corresponds to for all timescales.
3. Candidate sources which are detected more than 60 times across the full dataset are classified as scintillating sources that were not captured by the source catalog (either because they were below the 4.5σ detection threshold that was used to generate the catalog or they are positionally offset by more than $30'$ from the catalogued source position due to ionospheric refraction) and are therefore removed from the candidates list. In each of these cases, the presence of a source is verified against a deeper reference catalog, including a deeper OVRO-LWA map (Eastwood et al. 2018) and the VLA Sky Survey redux (VLSSr; Lane et al. 2014).
4. The remaining candidate transient sources are compiled into a list, along with corresponding metadata, including SNR in the detection images, approximate source size, coordinates, azimuth and elevation at the time of detection, number of times a source was detected at this position, the spectrum of the source at 24 kHz resolution, and an automatically generated classification label that identifies the source type based on fitted source size, spectral features, and position in the beam (see Section 3.5). Table 4 shows the number of candidate transients remaining at this step in the pipeline, for each of the timescales searched.

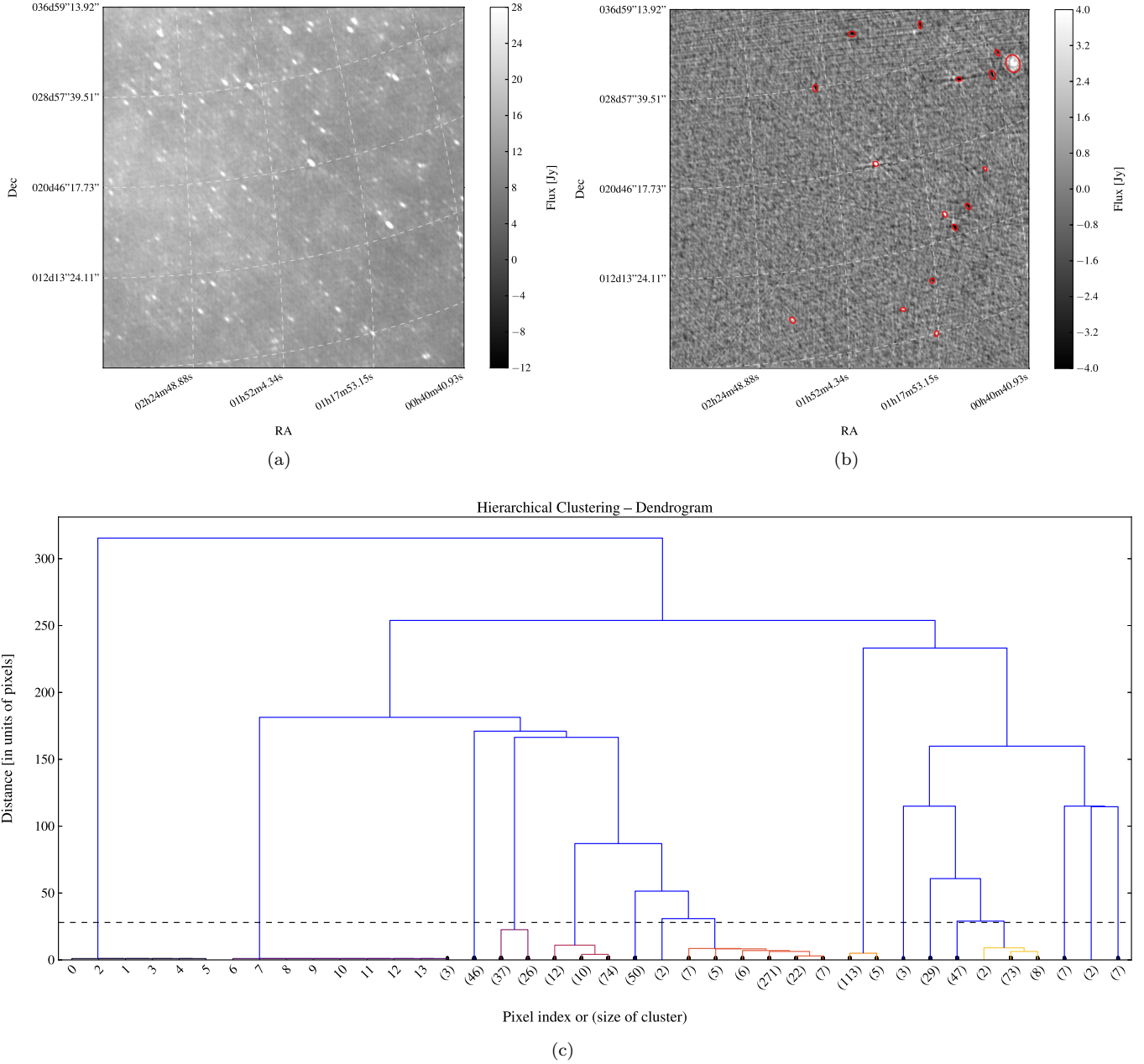


Figure 3. Example output from the hierarchical clustering algorithm, showing transient candidates identified in the source extraction pipeline from the difference image corresponding to the 13 s snapshot shown in (a). All pixels identified above a 5σ threshold in the region of the difference image shown in (b) are hierarchically clustered into individual sources, as shown visually in the dendrogram plot (c). The dashed line denotes the cutoff distance threshold used, above which all connecting nodes are disregarded and the clusters formed below this threshold represent the number of distinct sources identified in the difference image. In this example, there are 16 sources identified in the difference image, each of which is marked in (b) with a red ellipse.

3.4. Source Catalog

Due to the effects of the ionosphere (refraction and scintillation) and the solar wind (interplanetary scintillation; see e.g., Kaplan et al. 2015), significant source variability is present on sub-integration, and greater, timescales for the vast majority of sources in the OVRO-LWA FOV. In order to deal with the hundreds of (extrinsically) variable sources that are present in each sequentially subtracted image, an OVRO-LWA source catalog was generated (from the 31-hour dataset) in order to provide a self-consistent catalog of sources that can be cross-matched with sources

Table 4. Number of transient candidates remaining after major steps in the transient detection pipeline.

(1)	(2)	(3)
Timescale	$N_{\text{candidates}}$ after first cut	$N_{\text{candidates}}$ after auto-classification
13 s	4520	229
39 s	3761	152
2 min	3370	133
6 min	4669	598
sidereal	1700	109

detected in the subtracted images, thereby eliminating thousands of spurious detections due to extrinsic variability of persistent sources from consideration as transient sources. We note that this method of eliminating candidates that can be matched to a source in the catalog precludes detection of not only extrinsically but intrinsically varying sources. While intrinsic variability on timescales as short as 10s of seconds from persistent sources in the catalog is not expected (e.g., incoherent synchrotron emission from active galactic nuclei in which light travel time arguments preclude the possibility of variability on such short timescales Pietka et al. 2015), probing intrinsic variability is of interest on the longest timescales (approximately a month) to which the search is sensitive. However, variability studies are beyond the scope of this current work.

The source catalog is constructed from snapshot images across the full 31-hour dataset that are separated by approximately 5 hours down to a maximum limiting elevation of 10° . These snapshot images are median filtered in image space using a kernel size of 21 pixels, and subtracted from the non-filtered image, in order to remove any large-scale diffuse galactic emission and improve the detection and fitting accuracy of point sources (above a 4.5σ threshold) that can be recovered from the images and added to the source catalog. The source extraction algorithm used to generate the source catalog is the same algorithm used in the transient detection pipeline (see Section 3.3). The snapshot images used to construct the source catalog are filtered in image-space rather than through the tapering of visibility weights because the image space filter and subtraction removes extended emission without the “ringing” introduced by the hard tapering of short-spacing visibilities which is necessary to fully remove diffuse emission.

From the 31-hour dataset we assembled a catalog of 4500 sources that was used as a reference in the transient detection pipeline described below.

3.5. Classification and Visual Inspection

Human visual inspection was necessary at this point in the pipeline, both to evaluate the success with which the source extraction algorithm recovered sources above the 6.5σ threshold in the subtracted images and to ensure the accuracy of the automatically generated source classifiers. For each combination of timescale and dataset, the transient pipeline outputs an image containing relevant diagnostic information for all remaining candidate transient events, which includes image cutouts, spectra, and relevant metadata. Figure 4 shows an example output frame from the transient pipeline – one such frame is generated for every transient candidate, in every integration in which said transient is detected. Because the source extraction algorithm selects both for positive and negative sources, each candidate event should be detected at least twice, as it will be present in two subtraction images, first as a positive source and then as a negative source. The vast majority of all candidate events fall into one of the following categories – RFI reflection events likely associated with meteor ionization trails, airplanes passing above the array (showing either reflected or self-generated RFI), broadband RFI on or within a few degrees of the horizon associated with power lines, Cas A and Cyg A sidelobes, and scintillating sources.

3.6. Follow-up of interesting events

Each candidate transient source is automatically given an initial classification based on the difference spectrum, fitted source size, and position. It is then visually inspected to ensure that classifiers are being correctly applied and that no transient source was missed. Eventually the verification of sources by manual human inspection will be phased out of the pipeline, and replaced with a more efficient and robust method of identifying and classifying sources using

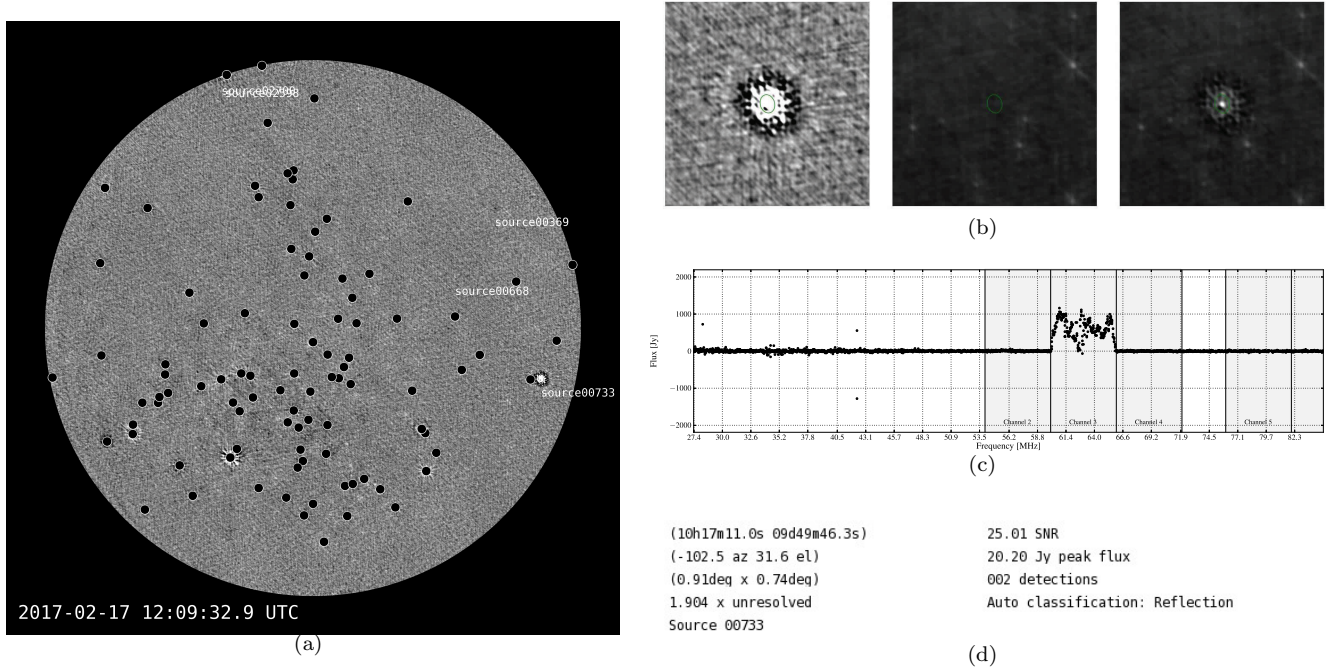


Figure 4. An example output image from the transient pipeline. The subtracted image in which the candidate transient source is detected (a). The color scale on the image is from -4 to 4 Jy. Black circles are covering sources that were detected in the source extraction pipeline but are present in the OVRO-LWA source catalog. Transient candidates without a catalog counterpart are labeled with their transient pipeline source ID. Image cutouts at the location of the transient candidate show the subtracted image in which it was detected, as well as the integrations which formed the subtracted image (b). The source difference spectrum (c) provides important diagnostic information, particularly in the case of meteor reflections, which is by far the most dominant non-astrophysical transient source in the dataset, occurring at a rate of approximately 0.1 s^{-1} . The vertical lines in the spectrum show the digital TV channel broadcast bands which are observable from the OVRO-LWA. In this example, the source spectrum is showing reflected Channel 3 TV broadcasts, which spans 60–66 MHz. The pipeline also outputs metadata (d) on the candidate transient source, including RA and dec, azimuth and elevation, an approximate Gaussian fit to the source, the source ID, the signal to noise with which the source was detected, the peak flux (based on the approximate Gaussian fit), the number of times this source was detected, and an automatically generated classifier label.

a machine learning algorithm. However, for the current dataset, transient detection was automated to the point of candidate detection, which was sufficient for compiling a list of candidates and their associated metadata that could be then more robustly inspected and identified by human eyes. For those candidates that were not clearly associated with the types of events described above, and which did not have a counterpart in the VLSSr catalog at 74 MHz, the TIFR GMRT Sky Survey (TGSS; [Intema et al. 2017](#)) catalog at 150 MHz, or in the OVRO-LWA catalog generated from the (more sensitive) m-mode sky maps at 74 MHz ([Eastwood et al. 2018](#)), the following steps were taken to further characterize the candidate and verify as a transient event:

1. To better characterize the position, extent, and spectral behavior of each source, candidates are re-imaged at phase center. This is done across the full 58 MHz bandwidth, across multiple 2.6 MHz subbands, and in the frequency range over which a source shows emission in the difference spectrum.
2. Deconvolution is performed with a range of visibility weightings between natural and uniform in order to investigate the presence of flux on different spatial scales.
3. The source image is fit in order to confirm whether the source is unresolved, as expected for an astrophysical transient. If resolved, we investigate, typically confirming an atmospheric/meteor reflection event. The source visibilities are fit in order to robustly determine whether the source is unresolved, or, if it is resolved and in the

near-field of the array, to determine the source height (in which case it is most likely an atmospheric / meteor reflection event).

4. RESULTS

Across the entire 31-hour dataset, and for all timescales probed by the survey, a total of 36 232 images were searched in the transient pipeline, with each image covering approximately $17\,000\text{ deg}^2$ and nearly 5×10^4 independent beams. After eliminating all candidates associated with cataloged sources and repeat detections of sources at different timescales, 12 112 transient candidates were identified by the pipeline. Of these, 5 828 events were associated with meteor reflections; 2 011 events were associated with RFI reflected from and generated by airplanes; 1 430 events were associated with horizon RFI or bright source sidelobes; and 1 622 events were spurious detections of sidelobes or extended emission. None of the remaining 1 221 events, which were not automatically classified by the pipeline into one of the previous categories, were identified as astrophysical transients following human inspection – the events included scintillation of known sources, as well as detections associated with the Sun and a number of Jovian bursts.

4.1. Meteor Reflection Events

The most prevalent (non-astrophysical) transient source in our dataset is associated with the reflection of RFI from patches of high ionization in the atmosphere, likely caused by meteors. Meteors passing through the atmosphere are experiencing the ablation of material off their surface – this stripped material collisionally ionizes the surrounding air particles, creating a patch of ionized material with a plasma frequency $> 100\text{ MHz}$, and which is therefore able to reflect terrestrial RFI (Millman et al. 1948; Greenhow 1952). These are easily distinguished as digital (and a likely a few remaining low power analog) TV broadcasts by their spectral signature, with all emission fully contained within one or more of the broadcast bands designated by the Federal Communications Commission: Channel 2 – 54-60 MHz; Channel 3 – 60-66 MHz; Channel 4 – 66-72 MHz; Channel 5 – 76-82 MHz; Channel 6 – 82-88 MHz (see Crane 2008). Figure 4(c) shows a typical reflection spectrum associated with a meteor. While reflection events are consistently spectrally confined within one or more of the 6 MHz-wide digital broadcast bands, within those bands they can exhibit a wide range of spectral features, as well as a wide range in characteristic flux densities. They are typically less than 13 s in duration, however particularly bright events can last as long as $\sim 30\text{ s}$. Multiple reflection sources that are adjacent in position and likely associated with the same meteor trail can have spectra that show emission in different broadcast bands.

The automatic classification of transient candidates associated with meteor reflections is determined by the spectrum and approximate fit to the size of the source. For every integration in which the source is detected, the spectrum is convolved with a 6 MHz-wide top-hat function, and the location of the maximum of this filtered spectrum is identified. If the maximum falls within one of the known broadcast bands, is above a manually set detection threshold, and the fit to the source in the non-deconvolved image is resolved (in the near-field regime of the array) and circular to within a factor of 2, then the source is automatically classified as a meteor reflection (the latter specification is to distinguish it from airplane reflections – see Section 4.2 below).

We note that none of the meteor-associated emissions we observed appeared to be intrinsic in nature, i.e. akin to the fireball radio afterglows observed by Obenberger et al. 2015a. All meteor events observed by the OVRO-LWA in this dataset were clearly reflection events from ionized trails. However, this is not inconsistent with the predicted rate of fireball radio emission by Obenberger et al. 2016, which for a flux density lower limit of 540 Jy at 38 MHz corresponds to a detection rate of approximately 40 meteor afterglows year^{-1} .

4.2. Airplanes

Airplanes are another prevalent terrestrial transient source. Like meteor trail reflections, they are most frequently detected through their reflection of digital TV broadcasts, although many do also exhibit spectral features outside the known digital TV broadcast bands that are likely intrinsic. Although airplanes are a major contaminant in the transient pipeline, they are easily identified and flagged by their spectral features, their elongated shape, and movement across the FOV.

4.3. Horizon RFI and bright sources

Sources of broadband RFI, which are distinct from the reflection of television broadcast bands, are confined to the horizon in discrete directions, usually along the line-of-sight to power transmission lines. Although the RFI is restricted

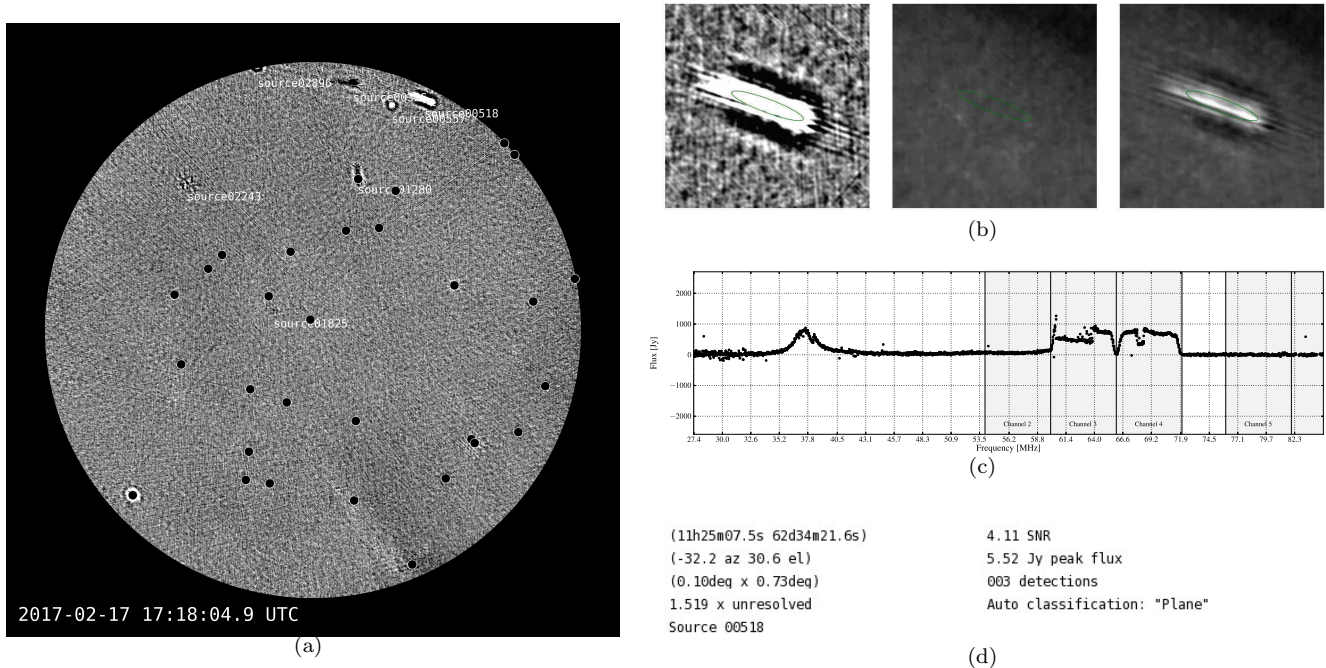


Figure 5. Detection of an airplane in the transient pipeline. Airplanes are a persistent contaminant in the transient pipeline, but are easily identified by their temporal, spectral, and image features. This plane was detected to the north-west of the array, in the approximate direction of Bishop Airport. In this example, the plane is detected through both reflected RFI (digital broadcast bands in Channels 3 and 4) and RFI that is generated by the plane itself (the peak at approximately 37.5 MHz).

to the horizon, it is still frequently detected by the transient pipeline at elevation angles as high as $\sim 20^\circ$. However, because the RFI is localized, both in position and in time, it is classified in the transient pipeline by hierarchical clustering of sources located at a specific set of azimuths and low elevations, weighted by $1/\Delta t$ where Δt is the time between separate detections.

A similar clustering scheme is used to flag detections in the transient pipeline associated with bright source sidelobes (e.g., Taurus A, Virgo A, Perseus A and B, etc., typically sources with flux densities greater than approximately a few hundred Jy), as well as Cas A and Cyg A residuals.

4.4. Scintillating sources

Another significant source of false positive transient candidate sources detected in the pipeline is quiescent sources that are varying due to scintillation. This includes discrete sources that were previously below the detection limit of the source catalog, which scintillated above the detection threshold in one or more difference images, as well as sources which were detected and included in the source catalog but exhibited a refractive offset significant enough to not have been correctly identified by the transient pipeline as a known source (i.e. $> 20'$ positional offset). In the latter case, all sources detected more than 60 times across the dataset at a given timescale were automatically classified as such, and later manually verified as variable sources (due to scintillation effects) rather than true transient events. In the former case, the scintillating nature of the source as opposed to a transient is verified by fitting for the source position and flux across the full dataset (and accepting a lower threshold than the 4.5σ cutoff that was used for generating the source catalog), as well as cross-matching the location of the source with the m-mode analysis maps generated from the same OVRO-LWA dataset, and the VLSSr and TGSS catalogs. A small subset of sources (~ 10) detected by the pipeline exhibited distinct ionospheric scintillation behavior, including an increase in flux confined to frequencies around 34 MHz, and as much as a few MHz wide, evolving on 13 s timescales and lasting for as long as a few minutes. The majority of these events occurred at low elevation ($< 20^\circ$), however a few were detected at high elevation, usually during periods of increased scintillation due to ionospheric activity.

5. DISCUSSION

Our transient search across 31 hours of OVRO-LWA data, at all five timescales probed, ranging from 13s up to sidereal day subtractions, resulted in no radio transients that could be identified conclusively as astrophysical in nature. We can use these non-detections to place upper limits on the instantaneous transient surface density for each timescale searched and at the flux density limits set by each timescale’s sensitivity. The instantaneous transient surface density is the number of transient sources per square degree that would appear in a snapshot of the sky at a flux density greater than or equal to the flux density at which the surface density is reported. This is distinct from a transient rate because the surface density is instantaneous and not reported per unit time. However, there is a timescale at which a transient surface density limit placed by a survey is applicable and it is set by the cadence of the survey. We report the 95 percent confidence level upper limit for the transient surface density, under the assumption that the rate of transients follows a Poisson distribution:

$$P(n) = \frac{\lambda^n}{n!} e^{-\lambda}, \quad (1)$$

where $\lambda = \rho \Omega_{\text{tot}}$ is the expected number of transients on the sky at any instant in time, ρ is the instantaneous transient surface density, and $\Omega_{\text{tot}} = (N_{\text{ind. epochs}} - 1) \times \Omega_{\text{FOV}}$ is the total surface area probed by the survey. For the OVRO-LWA, the FOV that is searched in each epoch is $17\,045 \text{ deg}^{-2}$. $N_{\text{ind. epochs}}$ is the number of independent epochs searched (i.e., epochs separated by at least the transient timescale probed), which for our survey is smaller than the total number of epochs searched by a factor $t_{\text{int}}/t_{\text{probed}}$. This is due to the fact that our search on longer timescales was conducted on difference images that were generated from two integrations separated by the timescale being probed, and which were shifted by single integration timescales to generate subsequent difference images. The result is over-sampling in the time domain of transients on timescales longer than the integration time. This is advantageous for maintaining sensitivity to potential transient events by providing a more matched temporal filter, however it also results in many epochs that are not independent samples of the transient sky (because they are separated in time by less than the timescale being probed).

From our survey non-detection ($n = 0$), we can place upper limits on the instantaneous transient surface density at a 95 percent confidence level ($P(0) = 0.05$), for all timescales that were searched, using Equation 1. Table 5 shows the instantaneous surface density limits placed for all timescales probed by the survey. The surface density limits placed, in the context of previous transient searches, is shown in Figure 6. We have placed the most constraining limits on the transient surface density at low frequencies at \sim few Jy-level sensitivities. In addition, our upper limits are consistent with those placed by [Obenberger et al. 2015b](#) at comparable frequencies and flux densities of a few hundred Jy and with those placed by [Rowlinson et al. 2016](#) at 182 MHz, assuming a flat spectral index and a standard candle population of transients in a Euclidean universe.

Table 5. Transient surface density limits placed for all six timescales probed by the OVRO-LWA transient survey. Because the entire OVRO-LWA FOV down to an elevation angle of 10° is searched as part of the transient pipeline, our single snapshot FOV is approximately 1.65π sr, or $17\,045 \text{ deg}^2$.

(1)	(2)	(3)	(4)
Timescale	$N_{\text{ind. epochs}}$	Sensitivity (6.5σ)	ρ
		(Jy)	(deg^{-2})
13 s	8586	10.5	2.50×10^{-8}
39 s	2862	13.8	6.14×10^{-8}
2 min	954	18.1	1.84×10^{-7}
6 min	318	20.8	5.53×10^{-7}
sidereal (1 d)	1	19.3	1.76×10^{-4}
sidereal (35 d)	1	19.7	1.76×10^{-4}

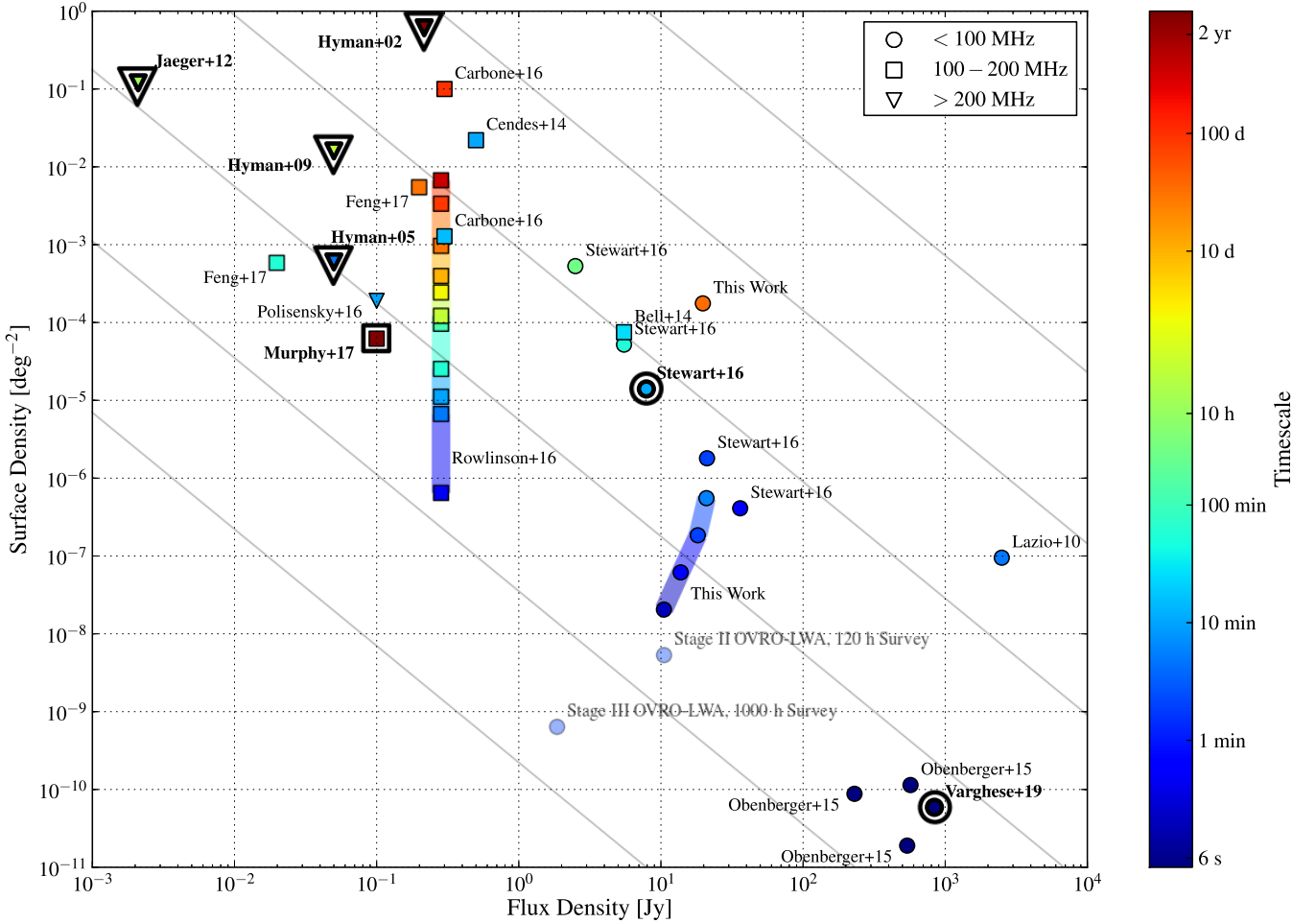


Figure 6. Radio transient phase space plot, showing the transient surface density as a function of flux density limits and timescales probed, for this and previous blind transient surveys (see Table 1 for an overview of all surveys included in this plot). The surface density limits for each survey are colored according to the timescale probed, covering timescales as short as 5 s (Obenberger et al. 2015b) to as long as 3 years (Murphy et al. 2017). This is a critical parameter, as surveys providing surface density limits at comparable sensitivities may be probing very different timescales and therefore very different regions of phase space and potential transient populations. The same is true of frequency. Surveys conducted below 100 MHz are marked with a circle, those between 100-200 MHz are marked with a square, and those between 200-350 MHz with a triangle. All points on the plot denote upper limits with the exception of the seven transient detections that are marked in bold. The solid gray lines denote hypothetical transient populations under the generic assumption that the population is a standard candle in a Euclidean universe, i.e., $N(> S) \propto S^{-\gamma}$ where N is the number density of sources, S is the flux density, and $\gamma = 3/2$. The limits (or detections) placed by transient surveys are necessarily a combination of sensitivity and total area surveyed, and it is often the case that tradeoffs must be made to improve one of these factors over the other. The optimal combination of these two parameters (and therefore how deep or wide a survey probes) depends on the goals of the survey or the source population(s) it is targeting. Also shown in this figure are the limits we expect to achieve with the OVRO-LWA in future surveys, first with the 120-hour transient survey with the stage II OVRO-LWA, and finally with the completed stage III OVRO-LWA utilizing 1000 hours of data capable of achieving 150 mJy snapshot sensitivity.

We can also place limits on the transient surface density as a function of flux density, $\rho(S)$, rather than reporting the surface density at a single flux density value approximated as an average of our survey sensitivity over the primary beam. Because the transient search is conducted over nearly the entire primary beam FOV, each epoch of our survey has non-uniform sensitivity, with the best and worst sensitivities achieved at zenith and 10° elevation angle, respectively. However, for a transient population described by a luminosity function with power law γ , varying sensitivity corresponds to probing different parts of the luminosity distribution, and therefore the number of transients

we can expect to detect within the volume probed by our survey is a function of sensitivity and the corresponding fraction of the sky covered by each sensitivity. Using Equation 1, we can write

$$P(0) = e^{-\rho(S(\phi)) \Omega_{\text{tot}}(\phi)}, \quad (2)$$

where $\rho(S(\phi)) = \rho_o \left(\frac{S(\phi)}{S_o}\right)^{-\gamma}$ and $\Omega_{\text{tot}}(\phi) = (N_{\text{ind. epochs}} - 1) \times \Omega_{\text{FOV}}(\phi)$. The flux density to which we are sensitive is a function of zenith angle ϕ , and determined by the primary beam gain pattern, which we approximate as $\cos^{1.6}(\phi)$. We can therefore write Equation 2 as

$$P(0) = e^{-\rho_o \left(\frac{S_{\text{zenith}}/\cos^{1.6}\phi}{S_o}\right)^{-\gamma} \times (N_{\text{ind. epochs}} - 1) 2\pi \sin\phi d\phi}, \quad (3)$$

where $S_{\text{zenith}} = 6.5\sigma_{\text{zenith}}$ is our transient survey detection limit at zenith. Under the assumption of $\gamma = 3/2$ for a standard candle population distributed uniformly in Euclidean space, the 95% confidence level on the transient surface density as a function of flux density, $\rho_o(S_o)$, becomes

$$\rho_o(S_o) = -\frac{\ln 0.05}{(N_{\text{ind. epochs}} - 1) 2\pi \int_0^{80^\circ} \cos^{1.6\gamma}\phi \sin\phi d\phi} \left(\frac{6.5\sigma_{\text{zenith}}}{S_o}\right)^\gamma, \quad (4)$$

$$\rho_o(S_o) = -\frac{\ln 0.05}{(N_{\text{ind. epochs}} - 1) 0.6\pi} \left(\frac{6.5\sigma_{\text{zenith}}}{S_o}\right)^{3/2} \text{sr}^{-1}, \quad (5)$$

where σ_{zenith} for each timescale probed is given in column 2 of Table 3.

With the exception of the five transient detections at > 150 MHz by [Murphy et al. 2017](#), [Jaeger et al. 2012](#), [Hyman et al. 2002](#), [Hyman et al. 2005](#), and [Hyman et al. 2009](#), and the detections by [Stewart et al. 2016](#) and [Varghese et al. \(ApJ submitted\)](#) of transients at 60 MHz and 34 MHz, respectively, all of the transient surveys shown in Figure 6 were only able to place upper limits on the transient rate at low frequencies. We note that in the case of the three detections by [Hyman et al. 2002](#), [2005](#), [2009](#), all were found in targeted observations of the galactic center and, based on their brightness temperatures and very low spatial volume covered by these surveys, are most likely located in the galactic center and therefore extrapolation of the detection of these objects to an all-sky rate is not applicable. In the case of the detection by [Jaeger et al. 2012](#), the transient has a much longer timescale than what is probed in the bulk of our survey, and was also found at significantly higher frequencies, indicating a potential source population to which our survey would not be sensitive. The transient found by [Stewart et al. 2016](#) was detected at the same frequency and timescale probed by the OVRO-LWA transient survey and at a comparable sensitivity, with a reported rate of $3.9_{-3.7}^{+14.7} \times 10^{-4} \text{d}^{-1} \text{deg}^{-2}$, corresponding to a detection of $8.4_{-8.0}^{+31.8}$ such events in our survey. However, its detection by LOFAR at 60 MHz with a 200 kHz bandwidth cannot constrain the spectral index or intrinsic bandwidth of emission for this event. The probability of our null detection of this potential transient population is $1.9_{-1.9}^{+644} \times 10^{-3}$, which allows us to rule out a transient rate $> 1.4 \times 10^{-4} \text{d}^{-1} \text{deg}^{-2}$ with 95% confidence. However, this is under the assumption of a flat spectral index and that the emission is broadband in nature. Figure 7 shows the probability of our null detection for a range of assumed spectral indices α and flux density distributions γ . If, however, the emission is of a narrow bandwidth relative to our observations, our sensitivity to this event decreases by a factor $\Delta\nu_{\text{intrinsic}}/\Delta\nu_{\text{obs}}$, where $\Delta\nu_{\text{obs}} = 58$ MHz is our survey bandwidth. Figure 8 shows the transient surface density limits placed by our survey as a function of flux density, for a range of flux density distributions γ .

6. CONCLUSION AND FUTURE DIRECTIONS

We have placed the most constraining limits on the transient surface density on timescales of 13 s to a few minutes and at frequencies below 100 MHz, with 31 hours of data from the OVRO-LWA. No transients were discovered on 13 s, 39 s, 2 min, or 6 min timescales, nor in the 7 hours of data that had a corresponding overlap in LST and that allowed us to search up to timescales as long as 1 d and 35 d. From our non-detections, we place an upper limit to the transient surface density of $2.5 \times 10^{-8} \text{deg}^{-2}$ at the shortest timescales probed at a flux density of 10.5 Jy.

The non-detection of any sources akin to the transient event detected by [Stewart et al. 2016](#) allows us rule out a rate $> 1.4 \times 10^{-4} \text{d}^{-1} \text{deg}^{-2}$ with 95% confidence, under the assumption of a flat spectrum and wide-bandwidth for this event. We further rule out a range of power-law luminosity distributions and emission spectral indices for the potential population detected by [Stewart et al. 2016](#), indicating that the event is likely narrow-band in nature. We

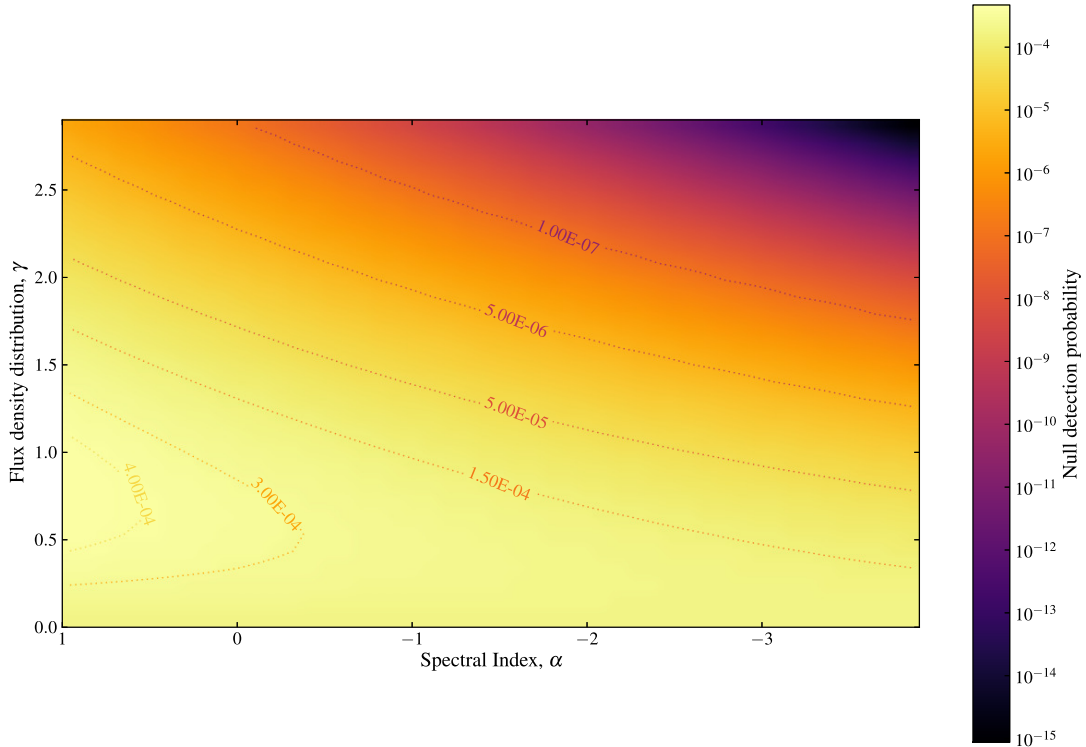


Figure 7. Probability of a null detection in the OVRO-LWA 31-hour survey of the potential population indicated by the event detected by [Stewart et al. 2016](#), given their transient rate of $3.9 \times 10^{-4} \text{ d}^{-1} \text{ deg}^{-2}$, as a function of the power-law luminosity distribution γ and source spectral index α , using Equation 2.

note, however, the danger of conducting putative population rates with a transient detection of one – the transient uncovered by [Stewart et al. 2016](#) could indeed have been the first detection of a population, but a uniquely bright outlier from that population. The event rate drawn from that single detection could therefore be vastly overestimated.

The non-detection of the population implied by the transient detected by [Stewart et al. 2016](#) can be used to inform the design of future planned surveys with the OVRO-LWA. The next transient survey will use additional data taken with the Stage II OVRO-LWA in 2018 March continuous 120 hours of observations. The duration of this dataset enables the transient search pipeline to operate entirely on difference images formed from sidereally matched integrations. This allows us to probe all timescales (between the integration time of 13s and the maximum separation of identical LSTs of 5 d) simultaneously, while avoiding the issues associated with sidelobe confusion and incomplete sky subtraction for diffuse emission away from zenith that cause an increase in noise on longer timescales. This transient survey will also feature sub-band searches in order to provide a better matched-filter in frequency space to the transient detected by [Stewart et al. 2016](#), as well as blind transient injections to better constrain the transient surface density probed as a function of sensitivity, timescale, and frequency parameters.

Finally, the stage III OVRO-LWA, which is scheduled to begin construction in mid-2019, will provide orders of magnitude more sensitivity to transient events, with the stated goal of 1000 hours for the first transient survey with the completed array, and 150 mJy sensitivities. In addition, mapping of individual dipole beams (a stated technical goal for the final stage array) will eliminate the sidelobe confusion that necessitates peeling, and enable us to integrate down in order to achieve better sensitivity on timescales longer than the 13 s integration time.

This material is based in part upon work supported by the National Science Foundation under Grant AST-1654815 and AST-1212226. GH acknowledges the support of the Alfred P. Sloan Foundation and the Research Corporation for Science Advancement. The OVRO-LWA project was initiated through the kind donation of Deborah Castleman and Harold Rosen.

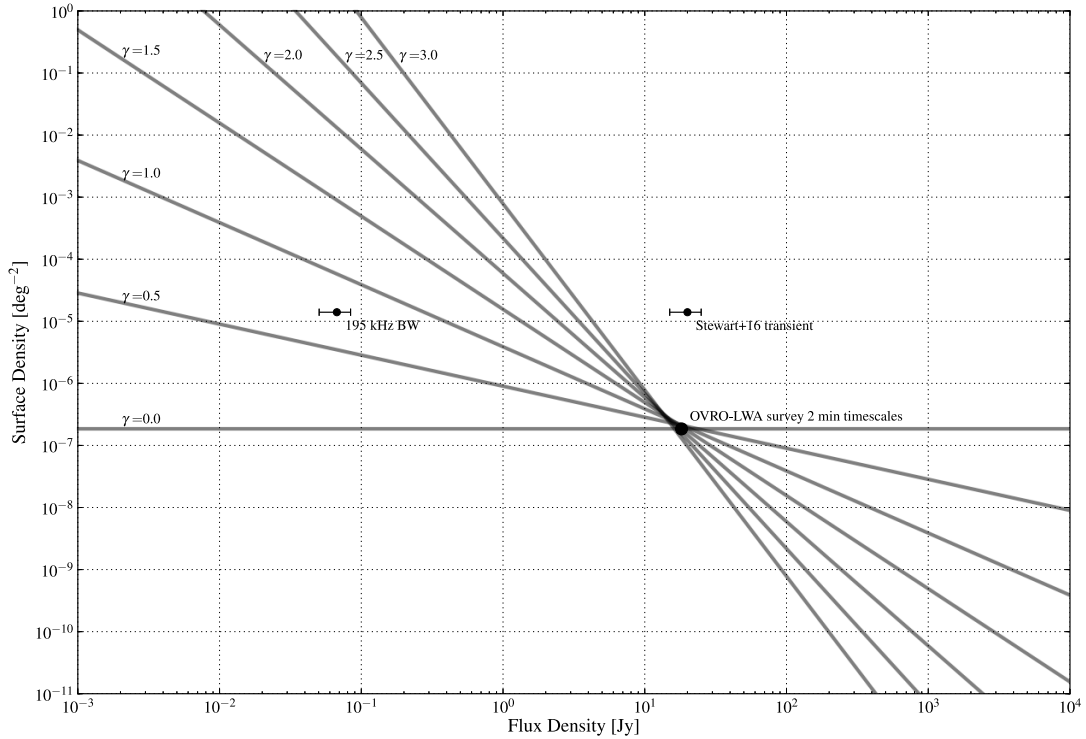


Figure 8. Surface density limits from the OVRO-LWA transient survey at 2 min timescales, for a range of power-law luminosity distribution γ . For reference, the surface density for the transient detected by Stewart et al. 2016, at a reported flux density of between 15–25 Jy, and at the flux density that same event would appear at in our survey for a maximum intrinsic bandwidth of 195 kHz (the bandwidth of the survey by Stewart et al. 2016).

Part of this research was carried out at the Jet Propulsion Laboratory, California Institute of Technology, under a contract with the National Aeronautics and Space Administration, including partial funding through the President’s and Director’s Fund Program.

REFERENCES

- Amiri, M., Bandura, K., Bhardwaj, M., et al. 2019, *Nature*, in press, doi: [10.1038/s41586-018-0867-7](https://doi.org/10.1038/s41586-018-0867-7)
- Anderson, M. M., Hallinan, G., Eastwood, M. W., et al. 2018, *ApJ*, 864, 22, doi: [10.3847/1538-4357/aad2d7](https://doi.org/10.3847/1538-4357/aad2d7)
- Baars, J. W. M., Genzel, R., Pauliny-Toth, I. I. K., & Witzel, A. 1977, *A&A*, 61, 99
- Bastian, T. S. 1990, *SoPh*, 130, 265, doi: [10.1007/BF00156794](https://doi.org/10.1007/BF00156794)
- Bastian, T. S., Benz, A. O., & Gary, D. E. 1998, *ARA&A*, 36, 131, doi: [10.1146/annurev.astro.36.1.131](https://doi.org/10.1146/annurev.astro.36.1.131)
- Bell, M. E., Murphy, T., Kaplan, D. L., et al. 2014, *MNRAS*, 438, 352, doi: [10.1093/mnras/stt2200](https://doi.org/10.1093/mnras/stt2200)
- Briggs, D. S. 1995, PhD thesis, New Mexico Institute of Mining and Technology
- Carbone, D., van der Horst, A. J., Wijers, R. A. M. J., et al. 2016, *MNRAS*, 459, 3161, doi: [10.1093/mnras/stw539](https://doi.org/10.1093/mnras/stw539)
- Cendes, Y., Wijers, R. A. M. J., Swinbank, J. D., et al. 2014, ArXiv e-prints. <https://arxiv.org/abs/1412.3986v1>
- Chandra, P., & Frail, D. A. 2012, *ApJ*, 746, 156, doi: [10.1088/0004-637X/746/2/156](https://doi.org/10.1088/0004-637X/746/2/156)
- Cohen, A. 2008, Estimates of the Classical Confusion Limit for the LWA, Long Wavelength Array Memo #17. <https://www.faculty.ece.vt.edu/swe/lwa/memo/lwa0017.pdf>
- Cordes, J. M., Lazio, T. J. W., & McLaughlin, M. A. 2004, *NewAR*, 48, 1459, doi: [10.1016/j.newar.2004.09.038](https://doi.org/10.1016/j.newar.2004.09.038)
- Crane, P. 2008, Radio-Frequency Interference from Digital Television, Long Wavelength Array Memo #133. <https://www.faculty.ece.vt.edu/swe/lwa/memo/lwa0133.pdf>
- Cranmer, M. D., Barsdell, B. R., Price, D. C., et al. 2017, *Journal of Astronomical Instrumentation*, 6, 1750007, doi: [10.1142/S2251171717500076](https://doi.org/10.1142/S2251171717500076)

- Eastwood, M. W. 2016, TTCal, 0.3.0, Zenodo,
doi: [10.5281/zenodo.1049160](https://doi.org/10.5281/zenodo.1049160)
<https://doi.org/10.5281/zenodo.1049160>
- Eastwood, M. W., Anderson, M. M., Monroe, R. M., et al. 2018, *AJ*, 156, 32, doi: [10.3847/1538-3881/aac721](https://doi.org/10.3847/1538-3881/aac721)
- Ellingson, S. W., Clarke, T. E., Cohen, A., et al. 2009, *IEEE Proceedings*, 97, 1421,
doi: [10.1109/JPROC.2009.2015683](https://doi.org/10.1109/JPROC.2009.2015683)
- Falcke, H., & Gorham, P. 2003, *Astroparticle Physics*, 19, 477, doi: [10.1016/S0927-6505\(02\)00245-1](https://doi.org/10.1016/S0927-6505(02)00245-1)
- Feng, L., Vaulin, R., Hewitt, J. N., et al. 2017, *AJ*, 153, 98,
doi: [10.3847/1538-3881/153/3/98](https://doi.org/10.3847/1538-3881/153/3/98)
- Greenhow, J. S. 1952, *Proceedings of the Physical Society B*, 65, 169, doi: [10.1088/0370-1301/65/3/301](https://doi.org/10.1088/0370-1301/65/3/301)
- Hallinan, G., Littlefair, S. P., Cotter, G., et al. 2015, *Nature*, 523, 568, doi: [10.1038/nature14619](https://doi.org/10.1038/nature14619)
- Hankins, T. H., Kern, J. S., Weatherall, J. C., & Eilek, J. A. 2003, *Nature*, 422, 141, doi: [10.1038/nature01477](https://doi.org/10.1038/nature01477)
- Hyman, S. D., Lazio, T. J. W., Kassim, N. E., & Bartleson, A. L. 2002, *AJ*, 123, 1497, doi: [10.1086/338905](https://doi.org/10.1086/338905)
- Hyman, S. D., Lazio, T. J. W., Kassim, N. E., et al. 2005, *Nature*, 434, 50, doi: [10.1038/nature03400](https://doi.org/10.1038/nature03400)
- Hyman, S. D., Roy, S., Pal, S., et al. 2007, *ApJL*, 660, L121, doi: [10.1086/518245](https://doi.org/10.1086/518245)
- Hyman, S. D., Wijnands, R., Lazio, T. J. W., et al. 2009, *ApJ*, 696, 280, doi: [10.1088/0004-637X/696/1/280](https://doi.org/10.1088/0004-637X/696/1/280)
- Intema, H. T., Jagannathan, P., Mooley, K. P., & Frail, D. A. 2017, *A&A*, 598, A78,
doi: [10.1051/0004-6361/201628536](https://doi.org/10.1051/0004-6361/201628536)
- Jaeger, T. R., Hyman, S. D., Kassim, N. E., & Lazio, T. J. W. 2012, *AJ*, 143, 96,
doi: [10.1088/0004-6256/143/4/96](https://doi.org/10.1088/0004-6256/143/4/96)
- Kao, M. M., Hallinan, G., Pineda, J. S., et al. 2016, *ApJ*, 818, 24, doi: [10.3847/0004-637X/818/1/24](https://doi.org/10.3847/0004-637X/818/1/24)
- Kao, M. M., Hallinan, G., Pineda, J. S., Stevenson, D., & Burgasser, A. 2018, *ApJS*, 237, 25,
doi: [10.3847/1538-4365/aac2d5](https://doi.org/10.3847/1538-4365/aac2d5)
- Kaplan, D. L., Tingay, S. J., Manoharan, P. K., et al. 2015, *ApJL*, 809, L12, doi: [10.1088/2041-8205/809/1/L12](https://doi.org/10.1088/2041-8205/809/1/L12)
- Kocz, J., Greenhill, L. J., Barsdell, B. R., et al. 2015, *Journal of Astronomical Instrumentation*, 4, 1550003,
doi: [10.1142/S2251171715500038](https://doi.org/10.1142/S2251171715500038)
- Kramer, M., Lange, C., Lorimer, D. R., et al. 1999, *ApJ*, 526, 957, doi: [10.1086/308042](https://doi.org/10.1086/308042)
- Lane, W. M., Cotton, W. D., van Velzen, S., et al. 2014, *MNRAS*, 440, 327, doi: [10.1093/mnras/stu256](https://doi.org/10.1093/mnras/stu256)
- Lazio, W., T. J., Farrell, W. M., Dietrick, J., et al. 2004, *ApJ*, 612, 511, doi: [10.1086/422449](https://doi.org/10.1086/422449)
- Lazio, T. J. W., Clarke, T. E., Lane, W. M., et al. 2010, *AJ*, 140, 1995, doi: [10.1088/0004-6256/140/6/1995](https://doi.org/10.1088/0004-6256/140/6/1995)
- Lorimer, D. R., Yates, J. A., Lyne, A. G., & Gould, D. M. 1995, *MNRAS*, 273, 411, doi: [10.1093/mnras/273.2.411](https://doi.org/10.1093/mnras/273.2.411)
- Lynch, C. R., Lenc, E., Kaplan, D. L., Murphy, T., & Anderson, G. E. 2017, *ApJL*, 836, L30,
doi: [10.3847/2041-8213/aa5ff4](https://doi.org/10.3847/2041-8213/aa5ff4)
- Macquart, J. P., Keane, E., Grainge, K., et al. 2015, *Advancing Astrophysics with the Square Kilometre Array (AASKA14)*, 55. <https://arxiv.org/abs/1501.07535>
- McMullin, J. P., Waters, B., Schiebel, D., Young, W., & Golap, K. 2007, in *Astronomical Society of the Pacific Conference Series*, Vol. 376, *Astronomical Data Analysis Software and Systems XVI*, ed. R. A. Shaw, F. Hill, & D. J. Bell, 127
- Metzger, B. D., Williams, P. K. G., & Berger, E. 2015, *ApJ*, 806, 224, doi: [10.1088/0004-637X/806/2/224](https://doi.org/10.1088/0004-637X/806/2/224)
- Millman, P. M., McKinley, D. W. R., & Burland, M. S. 1948, *Nature*, 161, 278, doi: [10.1038/161278b0](https://doi.org/10.1038/161278b0)
- Mooley, K. P., Hallinan, G., Bourke, S., et al. 2016, *ApJ*, 818, 105, doi: [10.3847/0004-637X/818/2/105](https://doi.org/10.3847/0004-637X/818/2/105)
- Murphy, T., Kaplan, D. L., Croft, S., et al. 2017, *MNRAS*, 466, 1944, doi: [10.1093/mnras/stw3087](https://doi.org/10.1093/mnras/stw3087)
- Obenberger, K. S., Dowell, J. D., Hancock, P. J., et al. 2016, *Journal of Geophysical Research (Space Physics)*, 121, 6808, doi: [10.1002/2016JA022606](https://doi.org/10.1002/2016JA022606)
- Obenberger, K. S., Taylor, G. B., Lin, C. S., et al. 2015a, *Journal of Geophysical Research (Space Physics)*, 120, 9916, doi: [10.1002/2015JA021229](https://doi.org/10.1002/2015JA021229)
- Obenberger, K. S., Taylor, G. B., Hartman, J. M., et al. 2014, *ApJL*, 788, L26, doi: [10.1088/2041-8205/788/2/L26](https://doi.org/10.1088/2041-8205/788/2/L26)
- . 2015b, *Journal of Astronomical Instrumentation*, 4, 1550004, doi: [10.1142/S225117171550004X](https://doi.org/10.1142/S225117171550004X)
- Offringa, A. R., McKinley, B., Hurley-Walker, N., et al. 2014, *MNRAS*, 444, 606, doi: [10.1093/mnras/stu1368](https://doi.org/10.1093/mnras/stu1368)
- Perley, R. A., & Butler, B. J. 2017, *ApJS*, 230, 7,
doi: [10.3847/1538-4365/aa6df9](https://doi.org/10.3847/1538-4365/aa6df9)
- Pietka, M., Fender, R. P., & Keane, E. F. 2015, *MNRAS*, 446, 3687, doi: [10.1093/mnras/stu2335](https://doi.org/10.1093/mnras/stu2335)
- Polisensky, E., Lane, W. M., Hyman, S. D., et al. 2016, *ApJ*, 832, 60, doi: [10.3847/0004-637X/832/1/60](https://doi.org/10.3847/0004-637X/832/1/60)
- Price, D. C., Greenhill, L. J., Fialkov, A., et al. 2018, *MNRAS*, 478, 4193, doi: [10.1093/mnras/sty1244](https://doi.org/10.1093/mnras/sty1244)
- Ravi, V. 2019, *MNRAS*, 482, 1966,
doi: [10.1093/mnras/sty1551](https://doi.org/10.1093/mnras/sty1551)
- Rowlinson, A., Bell, M. E., Murphy, T., et al. 2016, *MNRAS*, 458, 3506, doi: [10.1093/mnras/stw451](https://doi.org/10.1093/mnras/stw451)
- Soderberg, A. M., Brunthaler, A., Nakar, E., Chevalier, R. A., & Bietenholz, M. F. 2010, *ApJ*, 725, 922,
doi: [10.1088/0004-637X/725/1/922](https://doi.org/10.1088/0004-637X/725/1/922)
- Spangler, S. R., & Moffett, T. J. 1976, *ApJ*, 203, 497,
doi: [10.1086/154105](https://doi.org/10.1086/154105)

- Stewart, A. J., Fender, R. P., Broderick, J. W., et al. 2016, MNRAS, 456, 2321, doi: [10.1093/mnras/stv2797](https://doi.org/10.1093/mnras/stv2797)
- Tingay, S. J., Goeke, R., Bowman, J. D., et al. 2013, PASA, 30, e007, doi: [10.1017/pasa.2012.007](https://doi.org/10.1017/pasa.2012.007)
- van Diepen, G. N. J. 2015, Astronomy and Computing, 12, 174, doi: [10.1016/j.ascom.2015.06.002](https://doi.org/10.1016/j.ascom.2015.06.002)
- van Haarlem, M. P., Wise, M. W., Gunst, A. W., et al. 2013, A&A, 556, A2, doi: [10.1051/0004-6361/201220873](https://doi.org/10.1051/0004-6361/201220873)
- Villadsen, J., & Hallinan, G. 2018, ApJ, submitted. <https://arxiv.org/abs/1810.00855>
- Zarka, P. 1998, J. Geophys. Res., 103, 20159, doi: [10.1029/98JE01323](https://doi.org/10.1029/98JE01323)
- Zauderer, B. A., Berger, E., Soderberg, A. M., et al. 2011, Nature, 476, 425, doi: [10.1038/nature10366](https://doi.org/10.1038/nature10366)